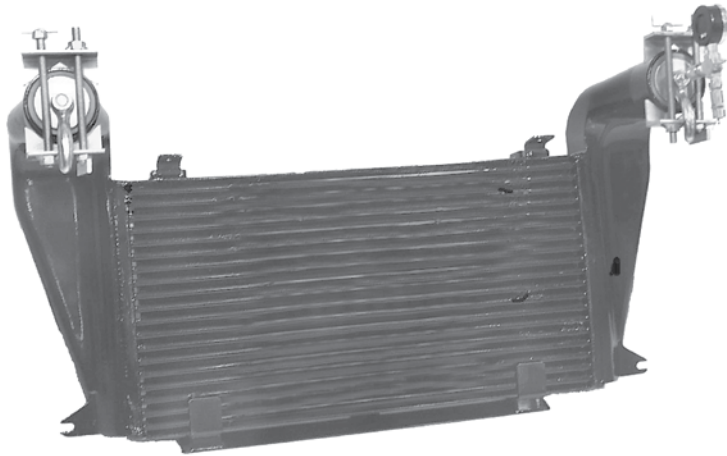


QUICK CHECK[™]

LEAK TEST KIT

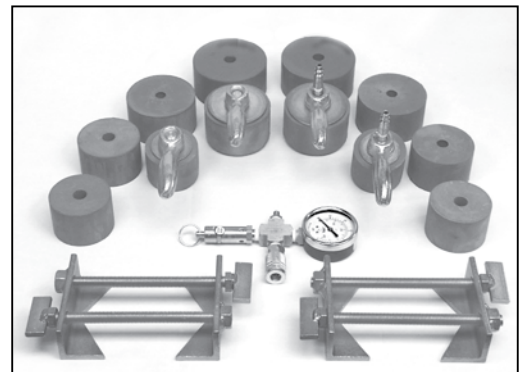


**Are you testing coolers
to see if they are
leaking beyond
O.E.M. specifications?**

**LOOK HOW EASY THE AV-TEKK QUICK CHECK LEAK TEST KIT
MAKES CHECKING A CHARGE-AIR COOLER WITHOUT REMOVING
IT FROM THE VEHICLE**

QUICK CHECK ADVANTAGES

- No other special tools needed
- Quickest and easiest connections available
- Simulates a constant air load for accurate diagnostics
- Fits most charge air cooler connection types
- Relief valve and restraints for safety
- Includes compact carrying case



**THIS COMPLETE KIT COMES WITH
ALL ADAPTERS AND FITTINGS TO
TEST ALL TRUCK SIZES, PICKUPS
THRU CLASS 8 TRACTORS.
ORDER PART NUMBER A351CAS**



INSTRUCTIONS FOR USING THE “QUICK CHECK” CAC LEAK TESTER

Av-Tekk’s new Test Kit may be used to test the pressure drop of most known sizes of charge-air coolers (CAC).

According to most OEM Manufacturer’s Specifications, charge-air coolers that show a static pressure drop greater than 5 PSI in a 15 second test, beginning at 30 PSI, should be replaced. Av-Tekk’s new CAC Test Kit provides tools for you to safely determine whether any CAC passes or fails the manufacturer’s test.

IMPORTANT!

USING HIGH AIR PRESSURES AND LARGE TEST PLUGS MAY PRODUCE DANGEROUS RESULTS!

Please read the warnings below and follow these instructions.

The test plugs in this set are heavier duty than most. Notice that each has a thicker washer to prevent cupping when you tighten the test plugs in the opening. They also have 4” long cast handles that permit you to tighten them more easily.

Inspect the inside of the opening and the test plug rubber, to make sure both of these surfaces are clean and dry. Test plugs should be installed flush with

the opening and tightened firmly by hand. Install the Test Plug Clamp, positioning it over the handle so the notched portion of the clamp engages the outside of the inlet/outlet just behind the bead. Hand tighten the long wing bolts equally, and check again to make sure that the notched portion of the clamp is engaged behind the bead at four points. Hand-tighten the wing bolts until snug or use an open-end wrench to tighten. Do not over tighten!

If the cooler has been removed from the vehicle, position it so the open stem is pointing up. Next, connect the brass tester at the quick disconnect side. This tester is equipped with a pop-off safety valve that has been preset to 35 lb maximum pressure. **DO NOT CHANGE THIS SETTING OR TAMPER WITH THIS DEVICE IN ANY MANNER.** Keep this safety valve clean and dry. Check it occasionally to make sure that it releases pressure at the 35 lb setting. Replacement safety valves and other parts are available if ever needed.

After checking to make sure everything is properly secured, introduce air through the air stem using a common tire chuck. Increase the air pressure to precisely 30 PSI and then measure the pressure drop, if any, for a period of 15 seconds.

WARNING!

- **WEAR SAFETY GLASSES WHEN TESTING.**
- **NEVER TEST A CHARGE-AIR COOLER WITHOUT HAVING BOTH OF THE PLUGS AND CLAMPS PROPERLY INSTALLED!**
- **DO NOT LEAN OVER PLUGS WHEN COOLER IS PRESSURIZED!**
- **IF YOU EVER ACCIDENTALLY OVER PRESSURIZE A COOLER WITHOUT FIRST INSTALLING THE SAFETY CLAMPS, IT COULD SEND A THREE POUND MISSILE MORE THAN 125 FEET, AT A VELOCITY OF OVER 75 MPH.**
- **NEVER POINT A LOADED CAC PLUG IN THE DIRECTION OF CO-WORKERS, THE PUBLIC, OR YOURSELF! SEVERE PERSONAL INJURY OR LOSS OF LIFE IS POSSIBLE!**

As soon as you have finished testing the charge-air cooler, return all parts of this set to the plastic case provided, and close it to keep them clean and dry for their next use.